

CAREERS FOR

Psychology

MAJORS

Psychology is the scientific study of the human mind, brain, and behavior. Branches of Psychology include cognitive (the study of perception and thinking), abnormal (the study of mental disorders), personality and social (the study of individual personalities and the behavior of individuals in groups), developmental (the study of learning and development across the lifespan), and biological (the study of neuroscience). [UNM's Department of Psychology](#) offers a Bachelor of Science degree (students must complete a science minor) and a Bachelor of Arts degree (students may complete a minor in any discipline).

The [Basics in Addiction Counseling concentration](#) provides academic coursework and applied clinical experience to help prepare students for careers in the addiction counseling field. Psychology graduates with the BAC concentration will have completed all coursework requirements to apply for licensure from the state of New Mexico as a [Licensed Substance Abuse Associate \(LSAA\)](#) and [Licensed Alcohol/Drug Abuse Counselor \(LADAC\)](#).

Not everyone who gets a degree in Psychology works in the mental health field. Psychology graduates find employment in every industry and virtually every company in the country, and in a wide variety of occupations. Many entry-level careers are available in the helping professions to those with a Bachelor's degree in Psychology. It should be noted that obtaining a graduate degree is needed for careers such as [Psychologist](#) or [Mental Health Counselor](#).

Graduate School

Admittance into graduate schools typically require completed pre-requisites, passing of an entrance exam such as the GRE, and a competitive GPA. Admission requirements vary based on the program.

- [UNM's Department of Psychology](#)
- [UNM's Counselor Education program](#)

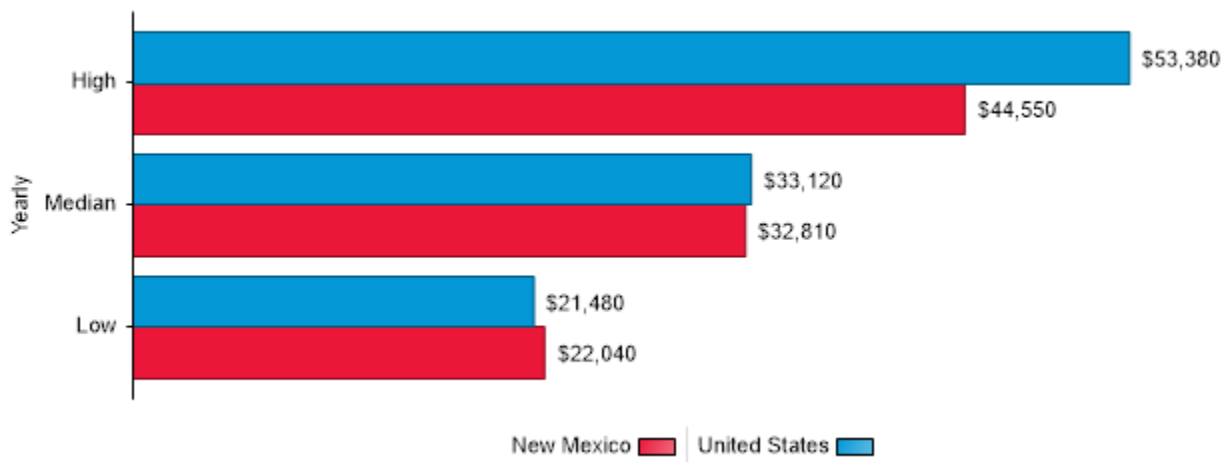
Industries & Target Employers

- Human Services: case management, crisis work, applied behavior analysis, rehabilitation services, administration, advocacy, volunteer coordinator, youth counselor, probation/parole officer, community center programs, job coach
- Government: public policy, intelligence, community affairs, municipal government, public information, conflict negotiation/mediation, program administration, foreign service
- Research: universities, government agencies, consulting firms, market research firms, non-profit organizations, political campaigns

- Education: teaching, research, administration, academic advising, program management, tutoring, student affairs, residence life, student activities, coaching
- Hospitals: case manager, care coordinator, counselor/social worker, mental health technician
- Human resources: recruiting, training and development, labor relations
- Business: sales, customer service, public relations, marketing, management

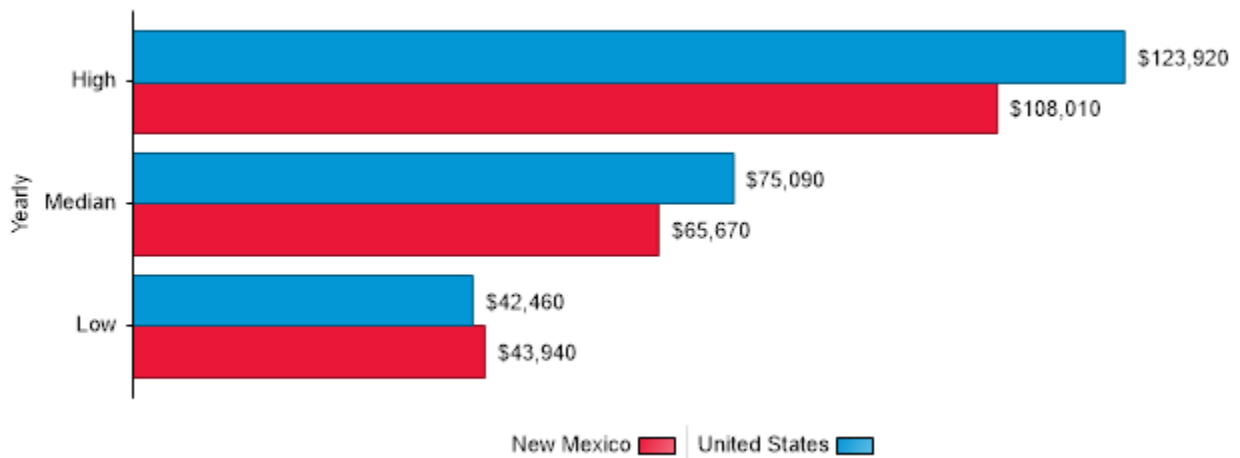
Salary Information

Wages for Social and Human Service Assistants in NEW MEXICO



*This is an entry-level position.

Wages for Clinical, Counseling, and School Psychologists* in NEW MEXICO



*Requires Master's degree or higher

Fun Facts

- A survey of UNM Psychology graduates over the past 10 years revealed that 3% were working as therapists (Psychologists, Counselors, or Clinical Social Workers), 4% held titles of President, Vice President or Executive Director, and 7% were in management positions, and 3% work at UNM.
- A rapidly growing entry-level occupation for Psychology majors is [Registered Behavior Technician](#). These para-professionals implement [applied behavior analysis \(ABA\)](#) treatment plans designed to teach social communication skills and appropriate behavior to their clients, often young children with Autism.

Tips

- Conduct [informational interviews](#) with professionals who perform jobs that interest you. Or find organizations you are passionate about and do an internship for that company.
- Research [non-profit companies](#) for potential organizations. Decipher what draws you to the field of psychology: is it understanding people, is it research, or is it helping people?
- Explore jobs that include those interests and skills and [job shadow](#) to see if it is a fit for you.

Learn More

[Register for Handshake: Lobo job and internship database](#)

[O*NET: Psychologist](#)

[O*NET: Social and Community Service Manager](#)

[Occupational Outlook Handbook: Social and Community Service Manager](#)

[Occupational Outlook Handbook: Psychologist](#)

[Psychology Student Organizations](#)

[Buzzfile Employers by Major: Psychology](#)

[Careers in Psychology](#)

[Jump Start Autism Center](#)

[Careers in Applied Behavior Analysis](#)

[Idealist](#)

[Nonprofit Job Listings](#)

[NM State Personnel Office](#)

[USA Jobs](#)

[American Psychological Association](#)

[American Counseling Association](#)

[National Association of Social Workers](#)

[American School Counselor Association](#)

[Student Affairs Professionals in Higher Education](#)

[UNM Jobs](#)

Questions? Visit UNM Career Services! Email onlinecareerservices@unm.edu or call 277-2531 to schedule an appointment.